



Carol Tresor

NATURAL TREASURES V



INTRODUCTION

We are pleased to present a high quality collection of Uruguayan crystals. All the pieces in this catalogue were legally and ethically sourced directly from the prestigious mines of Uruguay, South America. Uruguayan amethyst is internationally recognised as being the finest and most aesthetic amethyst in the world, due to its intense deep purple colouration, the large size of its peaked crystals, and its durability. These crystals were formed over 120-140 million years during the Cretaceous period, and as all of our pieces are formed naturally, they are completely unique and unrepeatable natural wonders.

Amethyst crystals are found inside vugs (hollow cavities) or geodes (rounded or spheroidal-shaped vugs) in volcanic areas or sedimentary rocks. In some cases, mineral-laden water filters through these hollow voids over millions of years, creating a crystal lining.

Geodes containing amethyst are often formed in Basalt (volcanic rock) and can be found in Uruguay and Brazil. The enchantment of finding a geode is discovering the hidden crystals that have formed inside over millions of years.

These crystals can be of a single type or a wonderful mixture of amethyst, agate, calcite, citrine and rock crystal.



NO. 4

LARGE ELECTRIC PURPLE AMETHYST

Place of origin: Artigas – Uruguay

Geological period: Cretaceous

Age: 120-140 million years old

Height (Including Stand): 40 cm

Dimensions: H 35cm x W 54cm x D 35cm

The electric intensity of this piece's colouration makes it both stunning and unique. The sparkling colour and natural wave-like form makes for a hypnotic sculpture evoking a sense of movement. Its shape allows us to imagine how this geode was formed as a bubble inside the ancient basalt, millions of years ago.

This aesthetic amethyst formation is exquisitely framed by a white quartz and dark-blue agate polished border. This piece is presented on a custom wooden stand, and it's beautifully polished in the round.



NO.5

AMETHYST WITH CALCITE, GREEN CELADONITE AND WHITE QUARTZ

Place of origin: Artigas – Uruguay

Geological period: Cretaceous

Age: 120-140 million years old

Dimensions: H 35cm x W 18cm x D 25cm

In this piece, rough amethyst's rich purple colouration is brilliantly pierced by the matt cream calcite formation that is bordered by a green celadonite and white quartz in a manner typical of Uruguayan crystal formations, but atypical of most other locations. As it is a rough state piece it invites us to admire the beautiful, naturally formed layers of basalt, green celadonite, white quartz, purple amethyst and the rare calcite formation at the heart of the piece.

The rough rear of the stone gives us an insight into how these wonders are spotted inside the mines. This exquisite mineral sculpture perfectly demonstrates how beautiful natural art can be, without any enhancement or restoration. Calcite formation on amethyst is relatively rare, owing to different formation temperatures required for the two minerals.



EXCEPTIONAL LARGE AMETHYST CLUSTER WITH CALCITE FORMATION

Place of origin: Artigas – Uruguay

Geological period: Cretaceous

Age: 120-140 million years old

Height (Including Stand): 57 cm

Dimensions: H 57cm x W 47cm x D 39cm

A breath-taking large amethyst cluster, with an incredible amethyst-overlaid calcite formation at the top. This formation is unusual for its overall scale and the extremely high quality of its intense violet amethyst crystals. Furthermore, the inclusion of an exceptional cream coloured calcite formation at the top that is overlaid with a blanket of amethyst and druzy white quartz.

The formation is completely natural and un-enhanced; the edges have been polished to reveal the white quartz base of the amethyst, which sits on a band of agate. The original rough basalt exterior survives on the back. Amethyst overlaid calcite is relatively rare, owing to different formation temperatures required for the two minerals. This stunning formation is one of the finest of its type to appear on the market.



VERY LARGE AND IMPRESSIVE AMETHYST PILLAR WITH WHITE QUARTZ SECTION

Place of origin: Artigas – Uruguay

Geological period: Cretaceous

Age: 120-140 million years old

Height (Including Stand): 1,40 cm

Dimensions: H 1,32cm x W 48cm x D 30cm

Given its breath-taking stature, one can see that this amethyst cluster was freed from an especially large geode and with amethyst of exceptional quality within. The colour and size of the crystals' peaks causes the light to be refracted exquisitely, creating a hypnotising, sparkling pillar of amethyst.

The variation of the colour, intensity and size of peaks are magnetising to the viewer. As the piece is in a rough state it's possible to appreciate the layers emerging, from the rough basalt at the back, the white quartz in the middle, which frames the intense amethyst on top. The piece is artfully supported by a custom metal stand.



COMPLETE AMETHYST GEODE WITH SEVERAL MINERAL CRYSTAL FORMATIONS INSIDE

Place of origin: Artigas – Uruguay

Geological period: Cretaceous

Age: 120-140 million years old

Dimensions: H 23cm x W24cm x D 10cm

Resembling an infinity sign, this whole geode is a stunning and rich piece, full of mineralogical information. The outer layer is basalt, the interior amethyst crystals, and at the heart of the geode lies a rare variety of mineral formations that developed naturally over the course of millions of years.

The facing edges on both sides have been polished to reveal green celadonite, agate layer and white quartz, which contrast with the tactile texture of the rough basalt. It is rare to get a whole geode of this form, allowing us to appreciate the original bubble shape inside the ancient basalt.

The way this geode is presented, with its two windows on either side, allows us to have an insight into the natural wonders, that occurred through the ages. The special formations include calcites, red and black druze and white quartz, arranged around the amethyst core. Calcite formation on amethyst is relatively rare, owing to the different formation temperatures required for the two minerals to occur. This piece is free standing and decorative in its size but contains a vast mineralogical variation.



SCULPTURAL GEODE HEART WITH AMETHYST AND RARE CALCITE CRYSTAL FORMATIONS

Place of origin: Artigas – Uruguay

Geological period: Cretaceous

Age: 120-140 million years old

Height (Including Stand): 43cm

Dimensions: H 31 cm x W 22cm x D 18cm

This is a unique geode heart placed in a custom rotating metal stand. Given the structure of this piece, it is possible to rotate and appreciate all the sides equally, giving the viewer an insight into the beautiful process that led to this formation being created millions of years ago. A tough basalt exterior, grey-brown agate border, and white quartz and amethyst interior, all complemented by a beautiful rocket-shaped calcite formation, itself covered in druzy quartz.

The exquisite palate of this formation also includes smoky druze covered hexagonal formation and red jasper, resulting in a beautiful and unusual piece that displays every mineral formation.



UNUSUALLY SHAPED WHITE QUARTZ WITH STALACTITE FORMATION

Place of origin: Artigas – Uruguay
Geological period: Cretaceous
Age: 120-140 million years old
Height (Including Stand): 15cm
Dimensions: H 10cm x W 15cm x D13cm

Stunning unusually shaped white quartz with stalactite formation. A stunning formation of white quartz on a wooden Stand. This beautiful and delicate piece presents a white quartz formation inside a geode. All the edges and back of the piece are defined by white quartz in its rough state.

A one of a kind piece, of a decorative size and with an intense sparkle. It's particularly special due to all the stalactite Formations coated with tiny quartz crystals that reflect the light beautifully, enhancing its special sparkle.



CALCITE FORMATION RESEMBLING A ROSE ON AMETHYST DRUZY QUARTZ

Place of origin: Artigas – Uruguay
Geological period: Cretaceous
Age: 120-140 million years old
Dimensions: H 16cm x W 13 x D 10cm

This uniquely beautiful sculptural piece, presenting the viewer with a calcite formation resembling a rose on amethyst druzy quartz with calcite crystal dots speckled on top.

The piece conserves part of the original geode and it is still possible to appreciate the basalt around and at back in its rough state. The edges have been polished revealing the stunning combination of white quartz and lilac amethyst druze. The piece is mounted on a custom metal stand.



AMETHYST CLUSTER WITH STALACTITE AND CALCITE FORMATION

Place of origin: Artigas – Uruguay

Geological period: Cretaceous

Age: 120-140 million years old

Dimensions: H 20cm x W 13cm x D 12cm

An exquisite and rare amethyst cluster with stalactite formations and calcite crystals. The stunning piece's shape resembles a "Cascade" or "waterfall", giving intensity to the crystal color. To further add to its beauty, this piece has calcite crystal "specks" spread on its surface, which adds a particularity to its aesthetic, causing a wonderful sensation of movement and shining glimpses.

The edges of the natural sculpture have been polished and reveal a beautiful frame of agate and white quartz. The back of this freestanding piece maintains its rough basalt condition and it is of a wonderful decorative size.



LARGE CALCITE CRYSTAL WITH DRUZY QUARTZ BLANKET ON AMETHYST SURROUNDED BY AGATE

Place of origin: Artigas – Uruguay

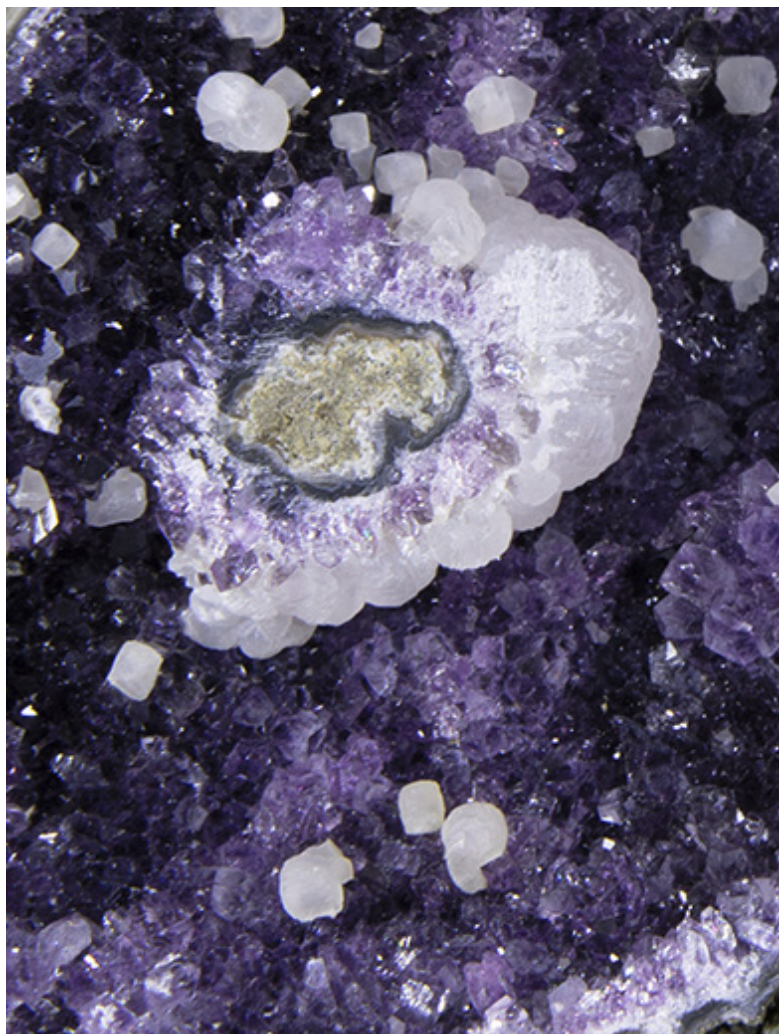
Geological period: Cretaceous

Age: 120-140 million years old

Dimensions: H 11cm x W 12cm x D 10cm

An exquisite and rare piece composed of blue/grey agate, white quartz, amethyst and calcite. This piece presents a large calcite reclining on an amethyst. To further add to its beauty, the large calcite has a white quartz druzy blanket on the surface which adds a wonderful effect and enhances its sparkle.

The edges of the natural sculpture have been polished and reveal a beautiful frame of blue/grey agate and white quartz. The back of this freestanding piece maintains its rough basalt condition.



AMETHYST CLUSTER WITH CALCITE CRYSTALS

Place of origin: Artigas – Uruguay

Geological period: Cretaceous

Age: 120-140 million years old

Dimensions: H 11,5cm x W 15cm x D 8cm

A stunning rough amethyst cluster with calcite crystals. This piece has an exquisite purple color and a calcite formation on the top. To further add to its beauty, this piece has calcite crystal “specks” spread on its surface, which adds a particularity to its aesthetic, causing a wonderful sensation of movement and shining glimpses.

The natural sculpture is surrounded by a beautiful frame of agate and white quartz. The edges and back of this freestanding piece maintain its rough basalt condition and it is of a wonderful decorative size.



AMETHYST PURPLE DRUZE QUARTZ WITH CALCITE FORMATION

Place of origin: Artigas – Uruguay

Geological period: Cretaceous

Age: 120-140 million years old

Dimensions: H 15cm x W 12cm x D 10cm

This delightful mineral sculpture has an unusual shape, formed of an almost complete geode, whose frontal portion wraps around like an arm, protecting the attractive “calcite” formation at its centre.

The calcite is very clear and allows us to see the beautiful combination of colours behind. The edges are polished, revealing a vibrant combination of grey-blue agate, green celadonite, red-pink jasper and white quartz that frames the amethyst.

To further add to its beauty, the piece is covered with a “blanket” of white quartz which enhances and gives sparkle to the piece.

The back of the piece maintains its rough basalt condition allowing us to imagine how the piece formed inside the cavities of volcanic rock, millions of years ago. A good decorative size and nicely displayed on a custom metal stand.



NO. 62

POLISHED AMETHYST EGG GEODE SUR- ROUNDED BY AGATE AND QUARTZ

Place of origin: Artigas - Uruguay

Geological period: Cretaceous

Age: 120-140 million years old

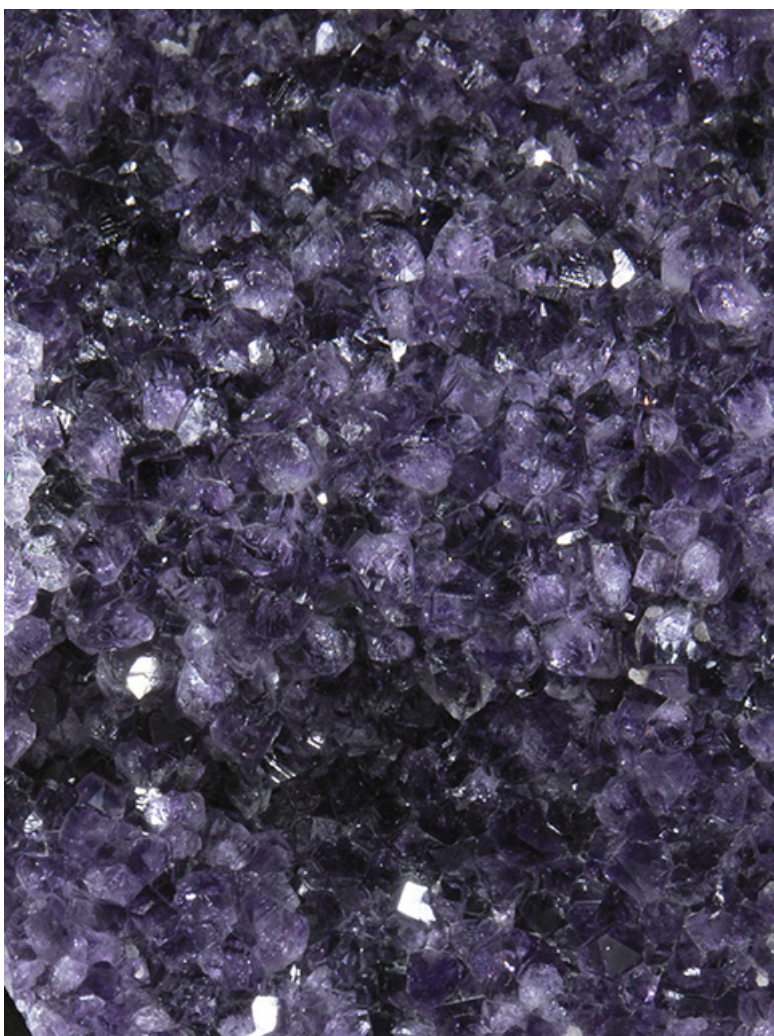
Dimensions: H 12cm x W 8,5cm x D 6,5cm

Colors fuse together in this uniquely beautiful piece, presenting the viewer with a small geode polished in the round.

At the heart of the piece we can see intense deep purple amethyst crystals surrounded by a white quartz layer. The frame of the amethyst formation is composed of a fusion of blue/grey agate, brown agate, green celadonite, and other tones of jasper, making the piece spectacular.

The smooth stone enables us to appreciate all the layers of the different mineral formations and contrasts beautifully with the peaked crystals.

A freestanding stunning piece of a very decorative size.



AMETHYST CLUSTER WITH AGATE AND GREEN CELADONITE

Place of origin: Artigas – Uruguay
Geological period: Cretaceous
Age: 120-140 million years old
Height (Including Stand): 29cm
Dimensions: H 22cm x W 13cm x D 10cm

A stunning rough amethyst cluster with white quartz and green celadonite on a metal stand. The amethyst cluster has an exquisite deep purple colour combined with white quartz, green celadonite and blue-grey agate.

The edges have been polished revealing the green celadonite and blue-grey agate frame which skirt the deep purple colour of the amethyst crystals. The natural sculpture maintains its rough state, so it's possible to appreciate the basalt in the back of the piece.

The piece has a very decorative size and is displayed on a metal custom stand.



NO. 264

DEEP PURPLE HALF GEODE AMETHYST WITH CALCITE FORMATIONS SHAPED AS CATHEDRAL OR CHAPEL

Place of origin: Artigas - Uruguay

Geological period: Cretaceous

Age: 120-140 million years old

Dimensions: H 35cm x W 23cm x D 15cm

This is a stunning half geode with a shape often referred to by collectors as a "chapel" or "cathedral", due to the elongated shape that occurred millions of years ago when trapped bubble rose in the liquid basalt.

This piece is very special due to its deep, intense purple colour and the variety of crystals sizes.

The facing edge of the piece is polished to reveal the white quartz layer, which frames the amethyst. Exteriously, lies the protectively varnished basalt layer, which is thicker at the bottom, allowing the piece to be free-standing. This piece also contains two calcite formations located in the lower left interior. Calcite formation on amethyst are relatively rare, owing to different formation temperatures required for the two minerals to occur. This is an original piece without any restoration.



NO. 268

BEAUTIFUL MIX OF AMETHYST DRUZE AND WHITE QUARTZ

Place of origin: Artigas – Uruguay

Geological period: Cretaceous

Age: 120-140 million years old

Height (Including Stand): 27 cm

Dimensions: H 19cm x W 15cm x D 9cm

Exquisite minerals fuse together in this uniquely beautiful combination of pinkish amethyst, white quartz and grey and brown agate on a custom metal stand. The natural sculpture resembling a leaf-like design. The edges of the piece have been polished, revealing grey agate and white quartz framing the beautiful pinkish amethyst at the heart of the piece.

The strong layered colour of the agate at the border perfectly contrasts with the white and pinkish colour of the amethyst at the interior, making a wonderful combination. The back of the piece maintains its rough basalt condition allowing us to imagine how this piece was spotted and formed inside the cavities of volcanic rock millions of years ago. This piece is very decorative due to its size and mix of colours, and is further displayed on a custom metal stand.



NO. 269

HIGH QUALITY HALF AMETHYST GEODE WITH CALCITE FORMATION

Place of origin: Artigas – Uruguay

Geological period: Cretaceous

Age: 120-140 million years old

Height (Including Stand): 38cm

Dimensions: H 29cm x W 17cm x D 13cm

A stunning half geode with an incredible amethyst and overlaid calcite formation at the bottom. The interior of the piece is a very deep cavity which presents very high-quality amethyst due to its deep purple and high peaked crystals. A further calcite formation lies at the bottom of the piece, which is overlaid with black hematite and white quartz. Calcite formation on amethyst is relatively rare, owing to different formation temperatures required for the two minerals.

The polished edges of the formation reveal the green celadonite, grey agate and the aesthetic is sealed with a smattering of sparkling white quartz crystals. These minerals frame and intensify the vibrant deep purple colour. The back of the piece maintains its rough basalt condition allowing us to imagine how this was spotted and formed inside the cavities of volcanic rock millions of years ago. This stunning piece is very decorative for its shape, size and mix of colours, and is well displayed on a custom metal stand.



CALCITE ON AMETHYST SURROUNDED BY AGATE WHITE QUARTZ AND GREEN CELADONITE

Place of origin: Artigas – Uruguay

Geological period: Cretaceous

Age: 120-140 million years old

Height (including stand): 35cm

Dimensions: H 27cm x W 20cm x D 10cm

An interesting and stunning geode section with a striking colour mix. In this aesthetic piece the original basalt has been polished to reveal the exquisite green celadonite hidden within on the front, whilst maintaining its rough condition at the back. Such a thick and vibrant celadonite layer is uncommon. The interior of the mineral sculpture is endowed with a gorgeous very deep purple amethyst formation, which contrasts with the green celadonite beautifully.

The transition between the green celadonite and the amethyst is marked by layers of brown agate and white quartz. Like a cherry on top, a beautiful white calcite formation, overlaid with white quartz, stands out on top of the sparkling amethyst. Calcite formation on amethyst is relatively rare, owing to different formation temperatures required for the two minerals. The exquisite piece is of a nice decorative size and is displayed on a custom metal stand.



NO. 273

AMETHYST CLUSTER WHITE QUARTZ CELADONITE AND AGATE WITH CUT STALACTITES

Place of origin: Artigas – Uruguay

Geological period: Cretaceous

Age: 120-140 million years old

Height (including stand): 43cm

Dimensions: H 30cm x W 22cm x D 10cm

Minerals fuse together in this uniquely beautiful piece, presenting the viewer with deep purple amethyst and a mix of white quartz, green celadonite, grey, brown and some artful inflections of pink and orange agate. Rare in the unique spectrum of hues it brings together, the mineral sculpture itself is further embellished by its polished frontal frame around the amethyst.

It's possible to admire wonderful natural designs resembling "flowers" or "eyes", with petals of white quartz and central orange/pink agate stems, formed by cut stalactites. These further enhance and intensify the deep colour of the amethyst. The back of the piece maintains its rough basalt condition, and the sculpture is mounted on a custom metal stand.



NO. 274

AMETHYST BROWN DRUZY QUARTZ STALACTITE CLUSTER WITH GREEN CELADONITE

Place of origin: Artigas – Uruguay

Geological period: Cretaceous

Age: 120-140 million years old

Height (including stand): 20cm

Dimensions: H 15cm x W 30cm x D 17cm

An exquisite brown druzy quartz stalactite cluster. The lower half of the geode is preserved, with the upper part removed to reveal the rare creation in its interior formed of many stalactites, resembling an otherworldly landscape. This piece is very special due to its uncommon brown colour, overlaid with a double layer of white quartz causing an intense sparkle. Some of the stalactites have been polished on the top to expose the cross-sectional nature.

The outer layer is polished and reveals a magical combination of colours due to the green celadonite, brown agate and white quartz. It is a very decorative piece and is displayed on a custom metal stand. It is very rare to find a piece with so many complete stalactites and such an unusual colour. The effect is breath-taking, making the colours within the piece vibrantly sparkle in the light, and giving it a beautifully mesmerising quality.



NO. 275

AMETHYST CLUSTER WITH PINK AGATE BORDER WITH BROWN-ORANGE DRUZE QUARTZ

Place of origin: Artigas – Uruguay

Geological period: Cretaceous

Age: 120-140 million years old

Height (including stand): 29cm

Dimensions: H 20cm x W 16cm x D 10cm

An exquisite deep purple amethyst cluster with mineral formation and a polished stalactite. This natural piece is surrounded and adorned with a beautiful polished border, where it is possible to see the mineral layers developing from the rough basalt, to the grey/blue agate, to pink agate and finally to the amethyst crystal. The multicolour border intensifies the vibrant deep purple tone of the amethyst. The lower part of the piece reveals a submerged mineral formation overlaid with brown-orange druze quartz and white quartz causing an intense sparkle.

Calcite formation on amethyst is relatively rare, owing to the different formation temperatures required for the two minerals. Furthermore, it's rare to see on a formation such as this, where the calcites are fully overlaid with druzy amethyst. With the upper part of this gorgeous natural sculpture, a polished stalactite stands out in the semblance of a "flower" or "eye", demonstrating an aesthetic harmony between natural beauty and design. The back of the piece maintains its rough basalt condition, and the sculpture is a very decorative piece and is displayed on a custom metal stand.



NO. 278

AMETHYST LIGHT GREY DRUZY QUARTZ GREEN CELADONITE WITH STALACTITES

Place of origin: Artigas – Uruguay

Geological period: Cretaceous

Age: 120-140 million years old

Height (including stand): 29cm

Dimensions: H 23cm x W 18cm x D 15cm

An exquisite light grey druzy quartz stalactite cluster with details in green celadonite and white quartz. This piece is very special due to its light grey colour, overlaid with a double layer of white quartz causing an intense sparkle. It's a very decorative piece not just for its good size but also for its easily combined colour combination. The edges of this piece are polished, revealing traces of the vibrant green celadonite and the grey agate, creating a stunning frame for the druzy quartz.

This entire formation is swathed in several layers of small white quartz crystals, and is further adorned with two stalactites polished at the top to expose the cross-sectional nature. The back of the piece maintains its rough basalt condition, and the sculpture is displayed on a custom metal stand. This piece is a wondrous combination of mineralogical information and decorative aestheticism.



NO. 279

BEAUTIFULLY SHAPED AMETHYST CLUSTER ON METAL STAND

Place of origin: Artigas - Uruguay

Geological period: Cretaceous

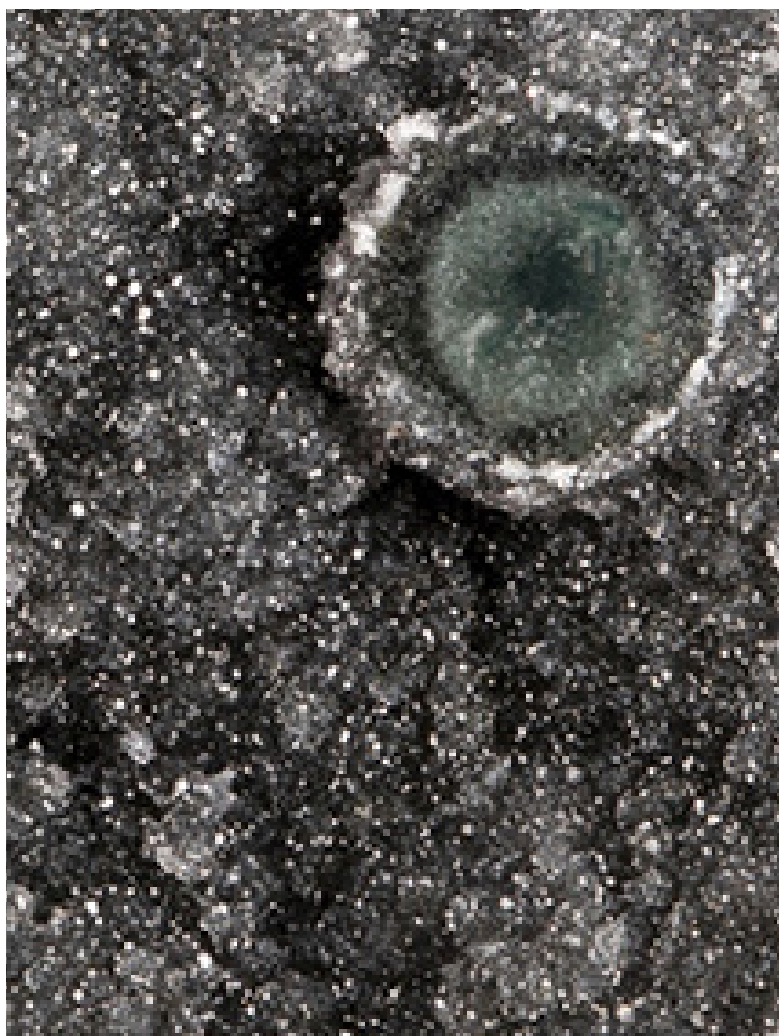
Age: 120-140 million years old

Height (including stand): 29cm

Dimensions: H 22cm x W 14cm x D 19cm

An exquisite deep purple amethyst cluster with stalactite formation. This natural piece is surrounded and adorned with a beautiful polished frame, where it is possible to see the mineral layers developing from the rough basalt, to the grey/blue agate, to pink, brown agate, to green celadonite and finally to the deep amethyst crystal. The multicolour frame intensifies the purple vibrant tone of the amethyst.

This particularly unique amethyst cluster has been cut in a triangular decorative shape. Furthermore, it's possible to appreciate the amethyst's stalactite formation complete and in their original state within its interior. The back of the piece maintains its rough basalt condition, and the sculpture is a very decorative piece and displayed on a custom metal stand.



STUNNING AMETHYST BLACK GALAXY AMETHYST CRYSTAL DÉCOR GEODE

Place of origin: Artigas – Uruguay

Geological period: Cretaceous

Age: 120-140 million years old

Height (including stand): 32cm

Dimensions: H 26cm x W 22cm x D 10cm

An exquisite black amethyst druzy quartz cluster with polished stalactites. Rare and notoriously difficult to find, this stunning and unique black amethyst druzy quartz, is known as Black “galaxy” Amethyst to collectors. The unique black druzy colour requires a very particular environment to occur, including hematite inclusions and a higher iron content inside the crystalline matrix.

To further add to its beauty, this piece also has several layers of quartz on top which add a glimmering dimension to its aesthetic causing an intense sparkle. The edges of the natural sculpture have been polished and reveal grey agate, white quartz and some glimpses of green caledonite. The piece is enhanced with 2 polished stalactites resembling “circles”, demonstrating an aesthetic harmony between natural beauty and design. The back of the piece maintains its rough basalt condition, and the sculpture is a very decorative piece and is displayed on a custom metal stand.



NO. 281

DEEP PURPLE BEAUTIFULLY SHAPED AMETHYST CLUSTER WITH FORMATION

Place of origin: Artigas – Uruguay

Geological period: Cretaceous

Age: 120-140 million years old

Height (including stand): 56cm

Dimensions: H 47cm x W 35cm x D 7cm

Exquisite deep purple beautifully shaped amethyst aesthetic cluster with stalactites formation. Colours fuse together in this uniquely beautiful piece, presenting the viewer with purple amethyst mixed with red-orange druze, creating a lovely colour. Amethyst is predominantly light violet to deep purple, but can be found with secondary hues of red and blue. Within this splendid formation one can notice glimpses of red hues within the violet to reflect the mineralogical journey the amethyst has traversed as it has developed.

The mineral sculpture itself is further embellished by polished stalactite formations, and reveals green celadonite, as well as red-brown agate and a white quartz layer between the amethyst and the basalt. The back and the edges of the piece maintain its rough basalt condition, allowing us to imagine how was spotted and formed inside the cavities of volcanic rock millions of years ago. This stunning piece is very decorative and is displayed on a custom metal stand.



NO. 283

DEEP PURPLE STALACTITE FORMATIONS ON METAL STAND

Place of origin: Artigas – Uruguay

Geological period: Cretaceous

Age: 120-140 million years old

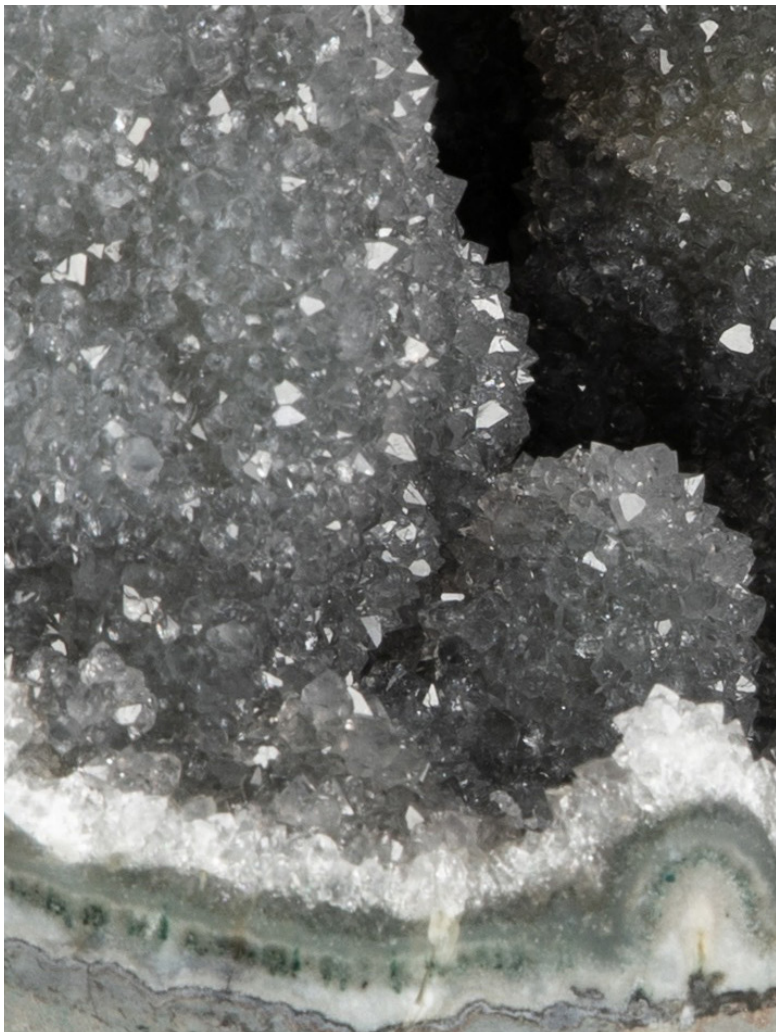
Height (including stand): 24cm

Dimensions: H 17cm x W 28cm x D 20cm

This piece comprises a stunning example of very deep purple amethyst, elegantly displayed on a metal stand, with a naturally decorative multiple stalactite adornment.

The polished borders of the formation allow one to appreciate the visible grey agate and brown agate, green celadonite, pink jasper and the aesthetic is sealed with a smattering of sparkling white quartz crystals. Some stalactites have been polished creating, at the borders, a flowery visual design, which gives the piece a decorative feel.

These flowers include amethyst petals, and a central stem composed of agate and jasper. The bottom of the piece maintains its rough basalt condition allowing us to imagine how it was spotted and formed inside the cavities of volcanic rock millions of years ago. This stunning piece is very decorative, due to the shape, the size and intense beautiful purple of its crystals. The piece is displayed on a custom metal stand, creating a decorative aesthetic



AMETHYST AND DARK GREY DRUZE STALACTITE FORMATIONS

Place of origin: Artigas – Uruguay

Geological period: Cretaceous

Age: 120-140 million years old

Height (including stand): 20cm

Dimensions: H 18cm x W 30cm x D 20cm

An impressive half geode displayed on a stylish and decorative metal stand, this piece is an amethyst dark grey druze, with beautiful multiple stalactite formations.

The edges of this beautiful mineralogical piece have been polished, and so it is possible to appreciate a layer of green celadonite, cream and grey agate and white quartz on top of the rough basalt.

This elegant assemblage of colour is dusted with a layer of white quartz, giving the piece a sparkling final touch. Some stalactites have been polished, revealing a wonderful mix of colours due to the mineral combination involved. The bottom of the piece maintains its rough basalt condition, allowing us to imagine how it was spotted and formed inside the cavities of volcanic rock, millions of years ago. This stunning piece is very decorative, due to the shape, size and the easy to combine grey colour.



NO. 285

STUNNING PURPLE STALACTITE FORMATIONS

Place of origin: Artigas – Uruguay

Geological period: Cretaceous

Age: 120-140 million years old

Height (including stand): 17cm

Dimensions: H 14cm x W 20cm x D 15cm

This stunning piece is a light violet/lilac amethyst with unique stalactite formations, presented as a mesmerising half geode on a stylish decorative metal stand. The edges of this beautiful mineralogical piece have been polished, to reveal a layer of green celadonite, light brown agate bordering the rough basalt, and the stunning aesthetic is finished with a smattering of white quartz.

The bottom of the piece maintains its rough basalt condition allowing us to imagine how it was spotted and formed inside the cavities of volcanic rock millions of years ago. This stunning piece is very decorative, due to its shape and size, and is displayed on a custom metal stand.



NO. 370

SPLIT POLISHED GEODE WITH CALCITE FORMATION

Place of origin: Artigas – Uruguay

Geological period: Cretaceous

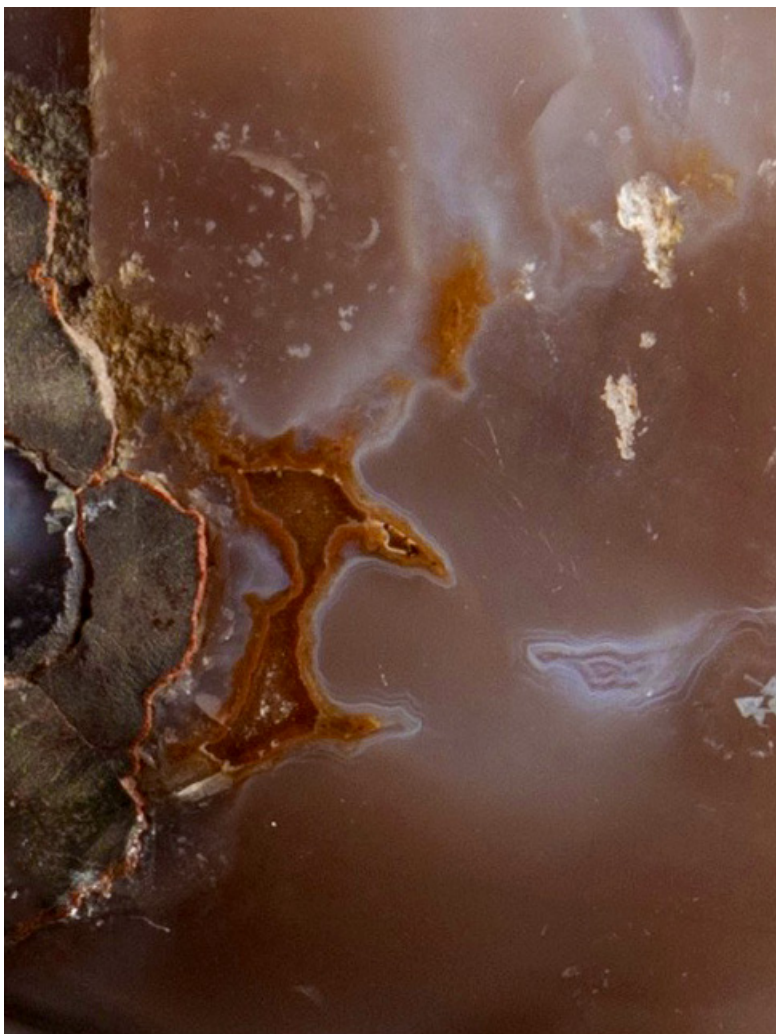
Age: 120-140 million years old

Height (including stand): 33cm

Dimensions: H 29cm x W 19cm x D 15cm

This is an extraordinarily complete geode, split in two atop a metal stand. This piece celebrates the visual phenomenon of the geode in its entirety, with some parts of the sculpture being rough basalt, and others showcasing combinations of the amethyst, agate, white quartz and calcite formations. The outer layer presents some polished parts and reveals a vibrant combination of grey agate, green celadonite, pink, cream jasper and white quartz.

This piece also reflects the beauty of natural wonders, as the interior presents intensely deep purple, large amethyst crystals. Like a treasure, protected during the passage of millions of years, a calcite formation lies intact at the top of the piece, preserved like its geode as a natural wonder. Calcite formation on amethyst is relatively rare, owing to the different formation temperatures required for the two minerals. This piece is very special with a stunning fusion of colours and minerals. This piece is particularly special as it's hard to find a complete geode that allows us to appreciate the natural magic occurring inside the volcanic rocks and all the beauty of these natural formations.



NO. 371

POLISHED GEODE SPLIT IN TWO WITH AMETHYST AND AGATE

Place of origin: Artigas – Uruguay

Geological period: Cretaceous

Age: 120-140 million years old

Height (including stand): 43cm

Dimensions: H 40cm x W 28cm x D 18cm

This stunning geode is split in two and displayed atop a stylish metal stand. An impressive scope of textures and colours are found in this beautiful, fully polished piece, from the rough basalt to the combinations of the mineral formations and colours, such as the very deep purple amethyst inside with its large crystal peaks.

The fully polished borders display splendid colours of brown, cream, pink agate and white quartz all displayed alongside the darker, rough basalt. This results in a fantastic blend of colours that demand attention and capture the imagination. Pieces such as this geode are especially impressive, as it is not always possible to polish the entire geode due to the thinness of the agate layers.



NO. 374

POLISHED SPLIT AMETHYST GEODE

Place of origin: Artigas – Uruguay

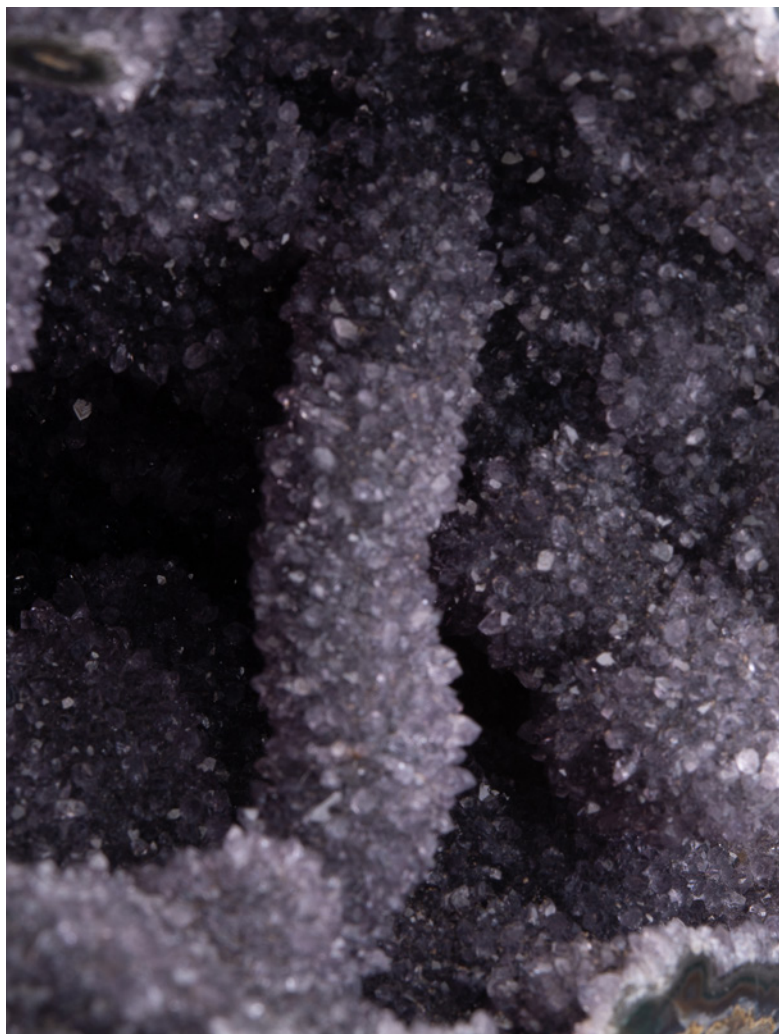
Geological period: Cretaceous

Age: 120-140 million years old

Height (Including Stand): 21cm

Dimensions: H 16cm x W 14cm x D 10cm

Polished to a breath-taking finish and presented on an artistic wooden stand, this unique and beautiful piece displays a half geode. The edges of the geodes have been polished revealing a vibrant combination of grey-blue agate and white quartz, framing and intensifying the deep purple high peaked crystal amethyst formed on the geode's interior. The back of the piece is a mixture of the rough basalt and some polished agate parts, allowing us to imagine how this stunning crystal was formed inside the cavities of volcanic rock millions of years ago. A natural wonder and a stunning decorative piece due to its beauty, its size, and the mineralogical information.



NO. 375

GEODE WITH STALACTITES AND STALAGMITES

Place of origin: Artigas – Uruguay
Geological period: Cretaceous
Age: 120-140 million years old
Height (Including Stand): 20cm
Dimensions: H 14cm x W 28cm x D 12cm

This extraordinary piece is a stunning geode displayed stylishly on a decorative a wooden stand. The interior of the geode comprising a dark grey amethyst Druze with multiple stalactite and stalagmite formations. The outer layer of the piece is in its natural state of rough basalt, and two “windows” show the inside of the geode. The edges of the windows have been polished, revealing the layers of grey agate, green celadonite embellished with layer of white quartz. This breath-taking piece is a beautiful visual insight into how geodes are naturally, and how the stunning crystals formed inside the cavities of volcanic rock millions of years ago and a spectacle of stalagmite and stalactites. It's a very interesting piece due to its mineralogical information, as well as being very decorative due to its size, and its mix of colors.



NO. 380

VERY LARGE TOWERING DEEP PURPLE AMETHYST SPLIT GEODE

Place of origin: Artigas – Uruguay

Geological period: Cretaceous

Age: 120-140 million years old

Dimensions: H 171cm x W 85cm x D 75cm

An exquisite and impressive very large half geode, resembling a towering column of crystals. This breath-taking piece represents one of the most exclusive amethyst formations to be presented for sale. Very large towering deep purple amethyst split geode. Evoking a sense of elegant grandeur, the rare beauty of this piece lies in the deep, intense purple violet colour of the amethyst crystals that are within the stunning half geode and the particularly high size of their peaks. The scale of this natural wonder creates a truly awe-inspiring feeling.

The edges of the geode have been polished, revealing a vibrant combination of brown and grey agate, green celadonite and white quartz - the minerals that framed the amethyst creation on the inside. The back of the piece is rough basalt, varnished in black and allowing us to imagine how this stunning crystal formation was formed inside the cavities of volcanic rock millions of years ago. It's very hard to find a complete half geode of these dimensions and form, that allows us to appreciate all the natural magic occurring inside these volcanic rocks, and the beauty of their formation. A one-of-a kind, museum piece.



NO. 381

HALF AMETHYST GEODE WITH CALCITE FORMATION

Place of origin: Artigas – Uruguay

Geological period: Cretaceous

Age: 120-140 million years old

Dimensions: H 45cm x W 75cm x D 50cm

This is an extraordinary half geode with a calcite formation. This piece celebrates the visual phenomenon of the geode interior with some parts of the sculpture being rough basalt, and others showcasing combinations of amethyst, agate, white quartz and calcite formations. The outer layer is the rough basalt, allowing us to imagine how this piece was spotted and formed inside the cavities of volcanic rock millions of years ago. The rounded edges of the geode have been polished, revealing a vibrant combination of grey/blue agate, pink jasper and white quartz that frames the amethyst creation on the inside.

The interior of the piece reflects the exceptional beauty of a natural wonder due to its intensely deep purple, large peaked amethyst crystals and the unusual calcite formation at its centre. The half geode invites us to think of a “cave” of basalt and agate that preserved and protected the treasure at its centre, over millions of years. This rare calcite formation embellishing the centre is overlaid at its base with tiny crystals of amethyst, black hematite and white quartz. It's a very special one of a kind piece of museum quality. A stunning, decorative piece, impressive for its size and freestanding.



NO. 384

POLISHED DEEP PURPLE AMETHYST “OPEN GEODE” WITH CALCITE AND AGATE

Place of origin: Artigas - Uruguay

Geological period: Cretaceous

Age: 120-140 million years old

Dimensions: H 1,40cm x W 1,10cm x D 90cm

This is an extraordinarily complete geode, split in two and mounted atop a custom metal stand. This piece celebrates the visual phenomenon of the geode in its entirety, with some parts of the sculpture being rough basalt, and others showcasing combinations of the amethyst and calcite formations. The outer layer is rough basalt, varnished in black, allowing us to imagine how the stunning crystals were formed inside the bubble-like cavities of volcanic rock, millions of years ago.

This piece also reflects the beauty of a natural wonder, as the interior presents intense, deep purple, large amethyst crystals. Protected through the passage of millions of years is a milky calcite formation, preserved at the heart of the piece, enhancing the wonder of this natural treasure. The edges of the geode have been polished around, revealing a vibrant combination of green celadonite, brown and grey agate, together with white quartz that all frame the amethyst creation on the inside. This piece is special as it's hard to find a complete geode that allows us to visually see the natural magic that occurred inside these prehistoric volcanic rocks. A one of a kind museum piece, stunningly decorative, very impressive for its size and displayed on a custom metal stand.



NO. 385

UNUSUAL WHITE QUARTZ “TREE” FORMATION

Place of origin: Artigas – Uruguay
Geological period: Cretaceous
Age: 120-140 million years old
Height (including stand): 66cm
Dimensions: H 54cm x W 44cm x D 28cm

A one of a kind, spectacular white quartz piece with a calcite formation. This piece is a stunning natural sculpture resembling a tree on a hill of white quartz. The prominent central trunk of calcite is beautifully overlaid with white quartz crystals, with traces of pink druze. The back of the piece retains its rough basalt finish, allowing us to imagine how it was spotted and formed inside the cavity of volcanic rock, millions of years ago.

The edges of the geodes have also been polished, revealing a vibrant combination of grey and brown agate, a thin layer of pink jasper and white quartz framing the beautiful natural creation. It's a collector's piece of museum quality. A very decorative formation, displayed on a custom metal stand. The dimensions of the stand can be customized as per client's request.



NO. 388

STUNNING CRYSTAL FORMATION IN WHITE QUARTZ AND PYRITE

Place of origin: Artigas – Uruguay

Geological period: Cretaceous

Age: 120-140 million years old

Dimensions: H 35cm x W 35cm x D 30cm

A very unusual and stunning formation with of a mix of minerals on a white quartz canvas. This freestanding piece represents a substantial part of the original geode and it is still possible to appreciate the basalt around and at back in its rough state.

The edges have been polished to reveal the brown agate underlying the white quartz. Inside there is a beautiful lining of large crystal white quartz, on top of which sits a “cascade” or “waterfall” of brilliant white quartz crystals with an incredible chocolate coloured cuboidal quartz formation itself coated with tiny quartz crystals and pyrite that reflect the light beautifully. It’s very unusual to find a formation like this, and it represents a one of a kind piece. A museum quality piece of a decorative size with an intense sparkle.



NO. 392

WHITE QUARTZ GEODE SLICE WITH AMETHYST FORMATIONS IN THE CENTRE

Place of origin: Artigas – Uruguay

Geological period: Cretaceous

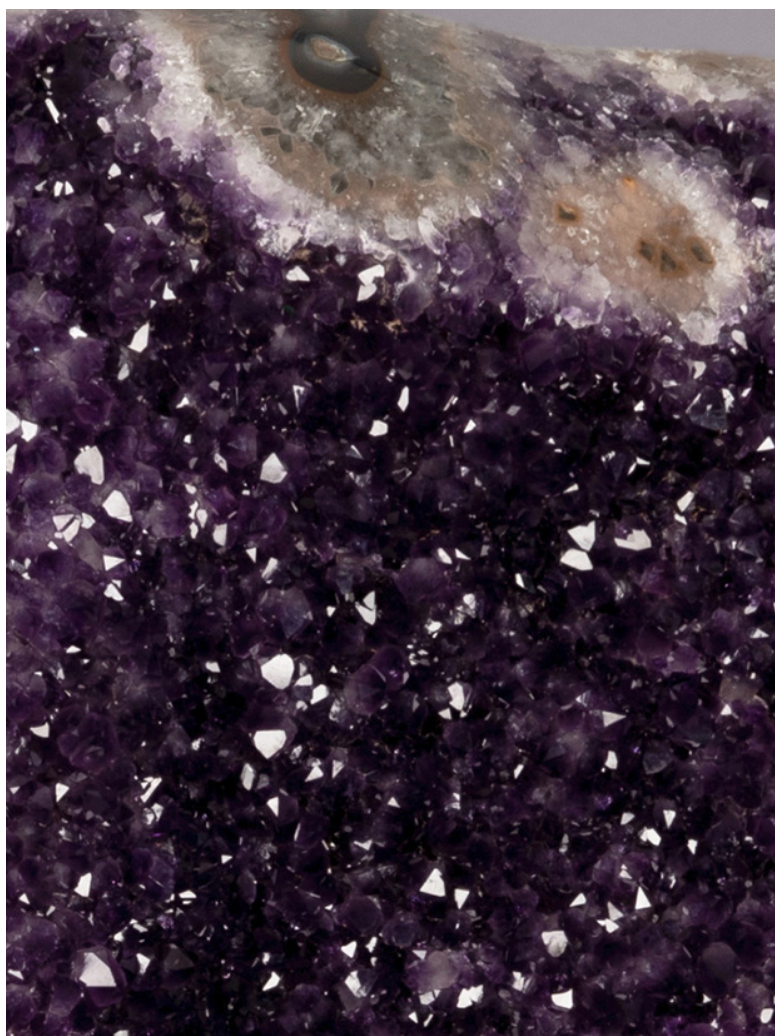
Age: 120-140 million years old

Height (including stand): 52cm

Dimensions: H 34cm x W 25cm x D 2cm

Stunning white quartz, amethyst and agate slice. This piece is a beautiful natural wonder. A thick band of white quartz with radiating crystal structure holds a heart of lilac amethyst at its centre. At its border traces of grey agate frame and contrast with the pure white of the quartz. The front of the piece is completely polished, whilst the back of the piece remains in its natural rough state. This allows us to imagine how it was spotted inside the mines, within its rough basalt matrix, and how it was formed inside the cavities of volcanic rock millions of years ago.

The piece it's a very decorative piece due to the mix of colours presented; grey, white and lilac, and is displayed on a metal custom stand. Exquisite piece which refracts light from the back as well as the front and with sparkling touch of the amethyst at its heart. The dimensions of the stand can be customized as per client's request.



NO. 398

VERY LARGE AMETHYST HALF GEODE WITH AGATE AND WHITE QUARTZ

Place of origin: Artigas – Uruguay

Geological period: Cretaceous

Age: 120-140 million years old

Dimensions: H 63cm x W 72cm x D 37cm

This is an extraordinarily large half geode with a vibrant colour. The interior of the piece reflects the beauty of a natural wonder, due to its intensely deep purple amethyst crystals. The edges of the geodes have been polished, revealing a vibrant combination of grey/blue agate, pink jasper and white quartz that beautifully frames the amethyst creation on the inside.

The outer layer is rough basalt, allowing us to imagine how this piece was spotted and formed inside a volcanic rock cavity millions of years ago. This stunning piece is very decorative, large and impressive due to its size and is freestanding.



NO. 407

UNUSUAL ROTATING GEODE SLICE WITH AMETHYST PEAKS AND CALCITE

Place of origin: Artigas - Uruguay

Geological period: Cretaceous

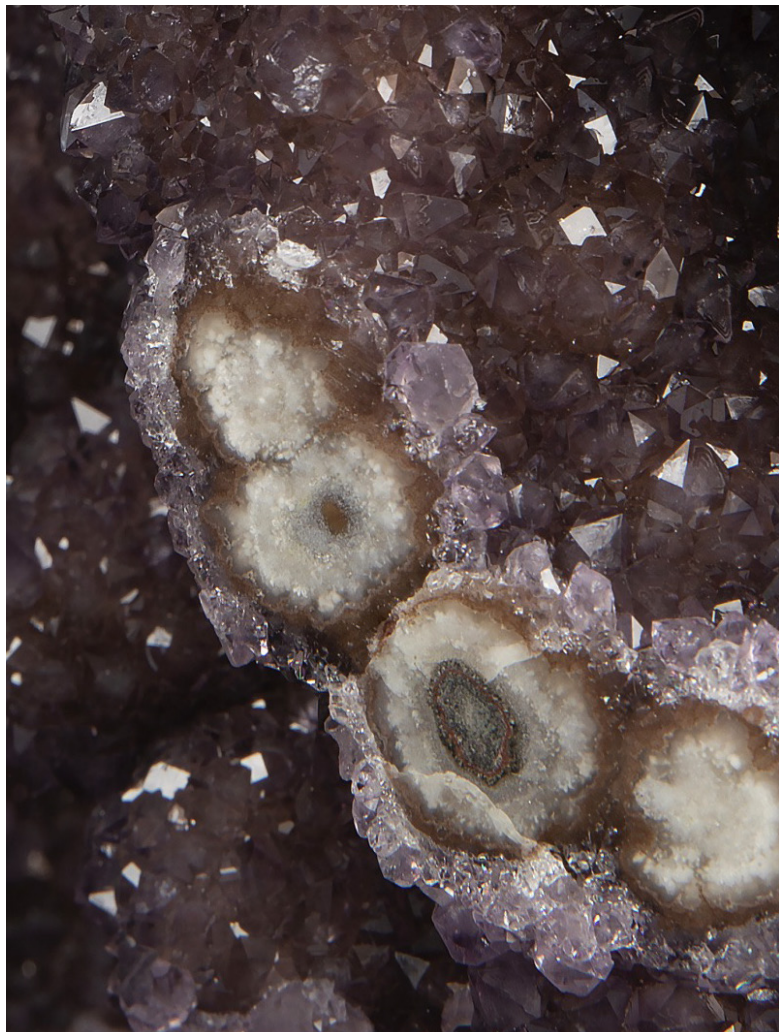
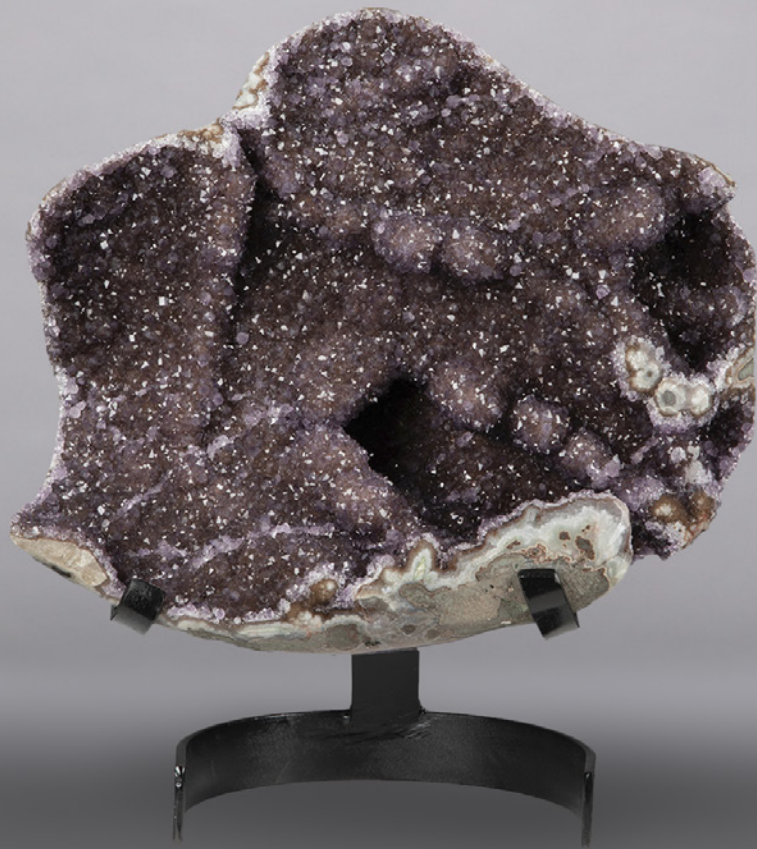
Age: 120-140 million years old

Height (Including Stand): 47cm

Dimensions: H 38 cm x W 23cm x D 10cm

A stunning geode slice on a custom metal rotating stand. From the rough basalt on the outside, to the rich purple amethyst crystals inside and calcite formation, this piece presents an exquisite combination of minerals on a sculptural journey. The outer layer is the original basalt, now smoothed, and the edges are all polished revealing agate and white quartz. All of this frames the very deep purple amethyst formation, with high peaks and glimmering crystals. The interior face of the slice further reveals a beautiful calcite formation resembling a flower.

The natural wonders encompassed here can be fully appreciated by the rotating nature of its stand - showing all the layers and minerals involved in a geode. This stunning piece is very decorative and it's on a custom rotating metal stand.



NO. 408

UNUSUAL AMETHYST AND RED DRUZE FORMATION WITH STALACTITES

Place of origin: Artigas – Uruguay

Geological period: Cretaceous

Age: 120-140 million years old

Height (Including Stand): 37cm

Dimensions: H 27cm x W 31cm x D 12cm

Colours fuse together in this uniquely beautiful piece, presenting the viewer with purple amethyst mixed with red-orange druze, creating a lovely combination. The mineral sculpture itself is further embellished by multiple stalactite formations, and gives the sensation of movement due to its wavy shape.

The edges have been polished, revealing a vibrant combination of green celadonite, red-orange jasper and white quartz that frames the amethyst, enhancing and intensifying the beautiful colour of the piece. The back of the piece maintains its rough basalt condition allowing us to imagine how it was spotted and formed inside the cavities of volcanic rock, millions of years ago. This stunning piece is very decorative and is mounted on a custom metal stand.



NO. 409

SPLIT AMETHYST GEODE WITH HIGH PEAKS AND GREEN CELADONITE

Place of origin: Artigas – Uruguay

Geological period: Cretaceous

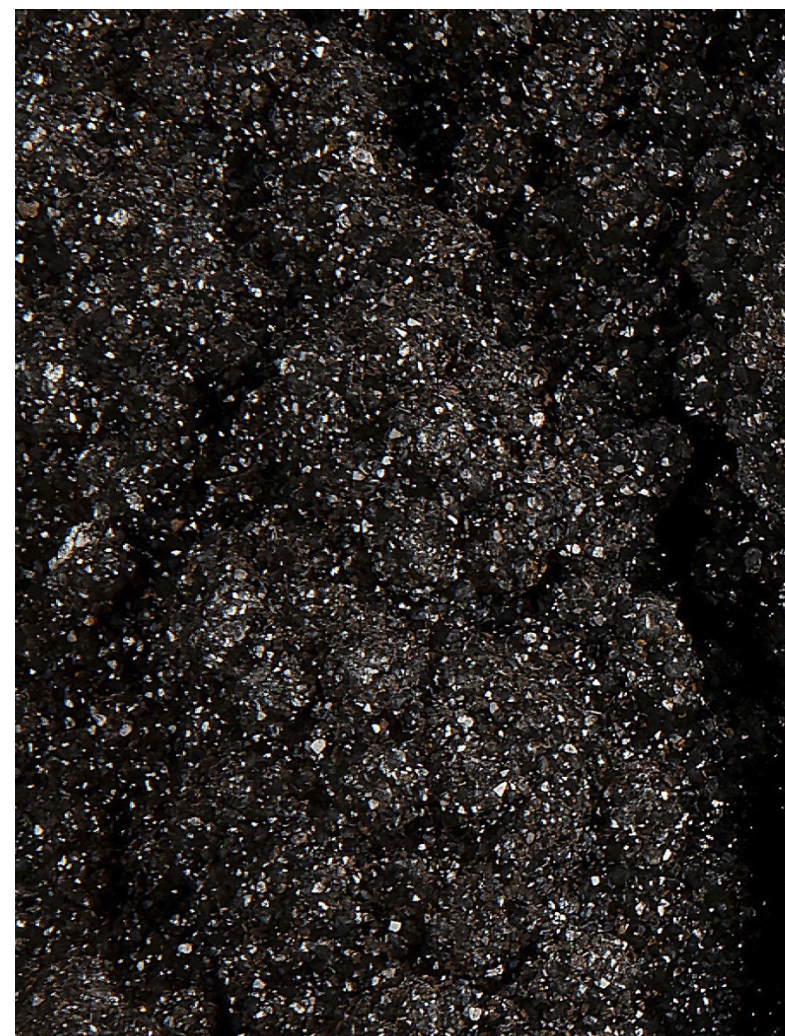
Age: 120-140 million years old

Height (including stand): 28cm

Dimensions: H 23cm x W 22cm x D 6cm

Exquisite polished amethyst geode with a circular shape. The front of the piece presents beautiful, vibrant, deep purple colour amethyst with high peaked crystals. A polished stalactite can be observed in the lower portion, resembling an amethyst flower with petals, with a central orange agate stem.

The edges have been polished, revealing the layers of rough basalt, grey agate, green celadonite, brown-red jasper and white quartz. All of these minerals border the amethyst crystals, enhancing and intensifying the beautiful colour of the piece. The back of the piece maintains its rough basalt condition allowing us to imagine how was spotted and formed inside the cavities of volcanic rock millions of years ago. This stunning piece is very decorative due to its size and is displayed on a custom metal stand.



UNUSUAL BLACK DRUZE FORMATION

Place of origin: Artigas – Uruguay

Geological period: Cretaceous

Age: 120-140 million years old

Height (Including Stand): 30cm

Dimensions: H 23cm x W 16cm x D 10cm

An exquisite black amethyst druze cluster with polished stalactite. Rare and notoriously difficult to find, this stunning and unique black amethyst druze, is known as Black “galaxy” Amethyst to collectors. The unique black colour requires a very particular environment to occur, including hematite inclusions and a higher iron content inside the crystalline matrix. To further add to its beauty, this piece also has a multiple small stalactites and is overlaid with white quartz to create a beautiful sparkle.

The edges of the natural sculpture have been polished and reveal grey agate, intense dark brown agate, white quartz and some glimpses of green celadonite. The back of the piece maintains its rough basalt condition. This stunning sculpture is very decorative due to its colour and size, and is displayed on a custom metal stand.



NO. 414

HIGH QUALITY DEEP PURPLE AMETHYST WITH CALCITE FORMATION WITH BLACK HEMATITE

Place of origin: Artigas – Uruguay

Geological period: Cretaceous

Age: 120-140 million years old

Dimensions: H 36cm x W 22cm x D 14cm

A stunning deep purple amethyst piece with calcite formation. From the rough basalt on the outside, to the high quality rich purple amethyst crystals inside and calcite formation, this piece presents an exquisite combination of minerals on a sculptural journey. The outer layer is the rough basalt and the edges are all polished revealing brown agate, green celadonite and white quartz.

All of this frames a very deep purple amethyst formation with glimmering crystals and a beautiful calcite formation. The calcite itself is overlaid with white quartz and has glimpses of black hematite. The natural sculpture is freestanding, and is a stunning, decorative piece.



Carol Tresor

Tel: +44 7507 420387

Email: info@caroltresor.com

www.caroltresor.com